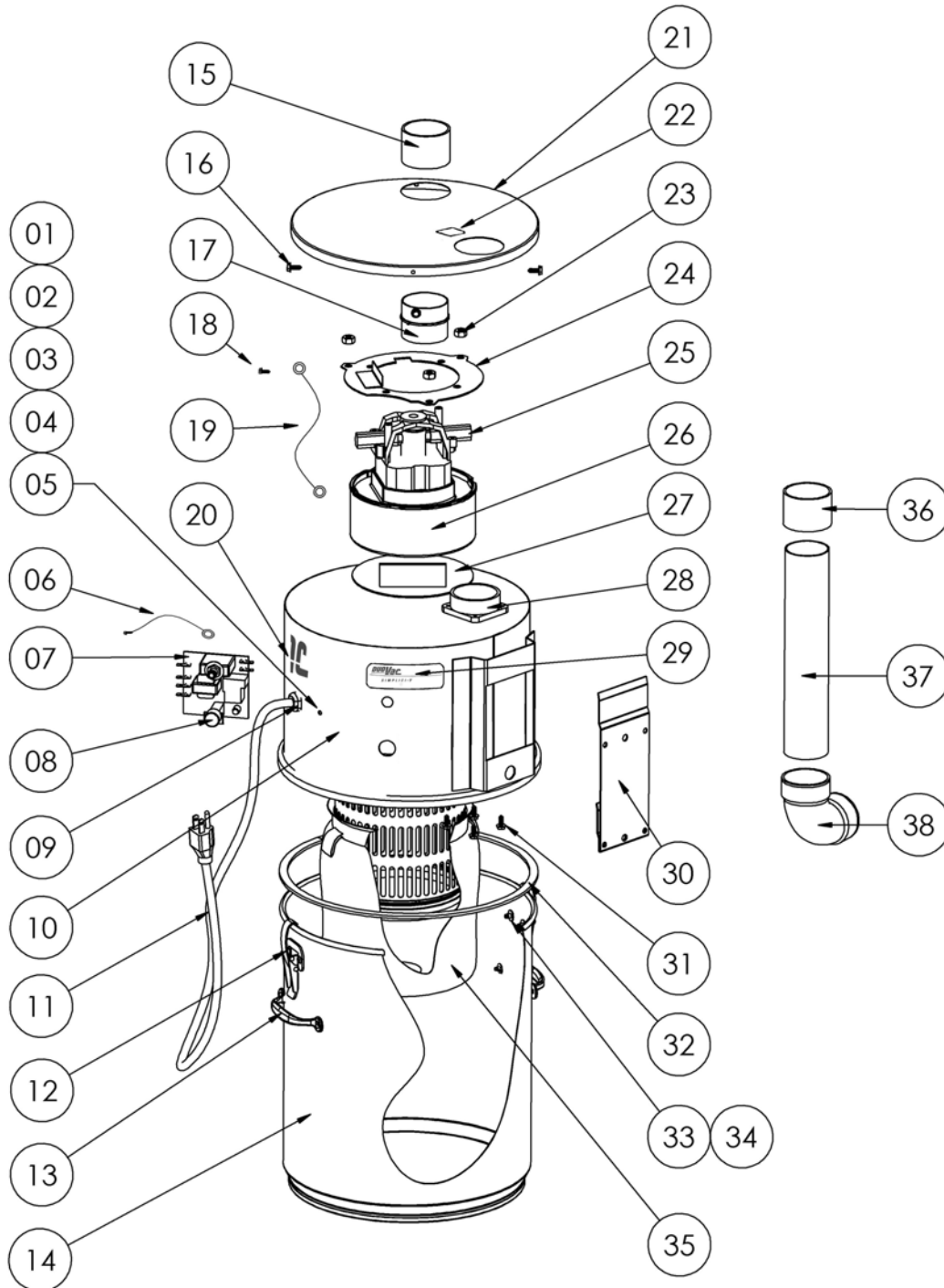




Electrical requirement	220-240 V ~, 50/60 Hz, 1488 W, 6,5 A
Maximum clean ability power	569 air Watts
Maximum vacuum	3983 mm H ₂ O 39,02 kPa 156.8" H ₂ O
Maximum air flow	205,24 m ³ /h 57,01 L/Sec 120.8 CFM (pi ³ /min)
Dust container Capacity	18,94 L 5.0 US gal
Dimensions [height x width x depth]	563,88 mm x 320,68 mm x 311,15 mm 22.5" x 12.625" x 12.25"
Mass	8,07 kg 17,8 lbs
Filtration system	DuoFib™ washable filter, 97,5% eff. @ 0,1µm

Specifications

Exploded view



#	no. de pièce Part no.	Qté e. Qty	Description
1	PAD-FAB-37	1	24 x 3/4" - Ground screw
2	PAD-FAB-36	2	Star washer
3	PAD-FAB-38	2	Lock washer
4	PAD-PAD-110	1	Hex nut with washer
5	PAD-FAB-02	1	Grounding point sticker
6	GROUND-CARTE-EUR	1	Green-yellow #10 wire, fem. round terminal
7	MOD-10-220-240-2	1	2 POINTS - Electronic module – 10A, 220-240 VAC
8	PAD-PAD-55	2	Female low voltage connector
9	PAD-PAD-34	1	Strain relief for power cord
10	BASE-CHA-100	1	Complete base assembly
11	CORD-EUR	1	10A, 220-240 VAC Power supply cord
12	ATTACHE-CUVE	2	Clip for dust container
13	POIGNÉE-CUVE	2	Handle for dust container
14	PAS-CUVE-12-C	1	Blue steel dust container - 12" (300 mm) diam. (incl. handles and latches)
15-36	TUY-35	2	Stop Coupling – For 2.0" (50,8 mm) pipe
16	QUI-VIS-BLEU	4	Blue self taping screw 18 – 1/2"
17	TUY-12	1	Spigot adaptor
18-31	PAD-PAD-70	5	Hex self taping screw
19	GROUND-EUR	1	2 eyelets #10 green-yellow grounding wire
20	LOGO-SIT	1	Logo, Simplici-T
21	COUVERCLE-CHA-100	1	12" (300 mm) diam. Blue steel cover
22	ETI-ES	1	Debris intake sticker
23	PAJ-PAJ-11	3	.25 " / nut with star washer
24	BRA-SUP-MOT-CHA	1	Motor support bracket
25	MOT-53-11	2	Carbon brush - 500 hours
26	MOT-53	1	Tru-flow motor - #119801-00 Ametek-Lamb 5.7" (145 mm) dia., 220-240 VAC
27	GASKET-MOT-05	1	Motor gasket
28	TUY-39	1	Straight flanged slip adaptor
29	PAD-PAD-44	1	Duo Vac / Serial # & ID sticker
30	SUP-MURAL-T1	1	Wall support
32	GASKET-CUVE	1	Gasket – For sealing dust container 48" (1,2 m) lg.
33	QUI-RIV-CUVE	8	5/32 – Close-end aluminium rivets
34	PAD-PAD-42	8	ID 156-5/32 / Steel washer
35	FILTRE-6X8	1	Polypropylene filter - 6" dia. x 8" lg. (800-820-825-850)
37	TUY-61-BLA	3	2.0" (50,8 mm) dia. - PVC pipe
38	TUY-17	1	Medium elbow